

SIEMENS

BSH Group is a Trademark Licensee of Siemens AG.



## Experience perfection in Dishwashing.

Introducing the all-new range of Siemens dishwashers with innovative technologies like **Home Connect**, **3-Stage rackMatic™** basket, **Touch panel** features which bring convenience to your fingertips. [siemens-home.bsh-group.in/](https://siemens-home.bsh-group.in/)

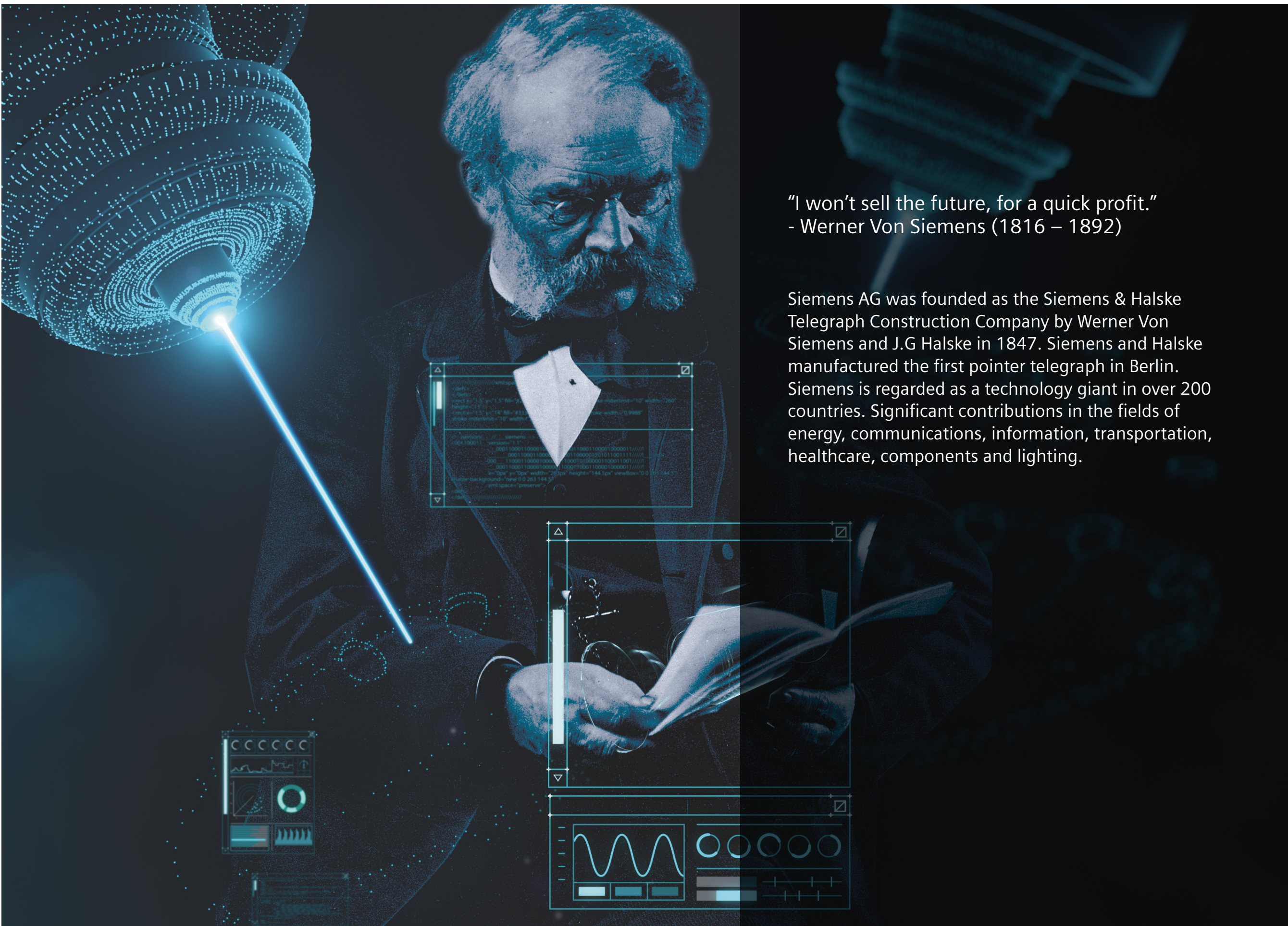
The future moving in.



**New  
Range**

Siemens Home Appliances





“I won’t sell the future, for a quick profit.”  
- Werner Von Siemens (1816 – 1892)

Siemens AG was founded as the Siemens & Halske Telegraph Construction Company by Werner Von Siemens and J.G Halske in 1847. Siemens and Halske manufactured the first pointer telegraph in Berlin. Siemens is regarded as a technology giant in over 200 countries. Significant contributions in the fields of energy, communications, information, transportation, healthcare, components and lighting.

# Evolution



Siemens is the most awarded Dishwasher brand in the world.





## Cutting edge features for that extra shine

Designed to fit in and around your busy lifestyle, our standard 60cm dishwasher features efficient, time saving and environmentally conscious programmes that are going to make your dishes shine. With sleek and stylish design, both inside and outside, Siemens dishwashers are designed to complement your home.





## What happens inside?

When it comes to automated dishwashing, to begin with, you DO NOT need to manually rinse the utensils. Just scrape off the leftovers present on the utensils before loading them. Place the dishes in the dishwasher and when the loading is complete, select one of the many programmes tailor-made to take care of your utensils. Just wait for the washing to complete to get dry, shiny and hygienic utensils.

Four stages in the washing cycle.



### Pre-rinse

The pre-rinse cycle effectively wipes out every stubborn food particle stuck on the utensils by using hot water to pre-wash. Followed by this process, the machine drains out the water.



### Washing Cycle

In the wash cycle, hot water plays an important role. Once the process is complete, the machine seamlessly drains out all the water.



### Rinsing

For every rinse cycle, the system instinctively takes fresh hot water inside the Siemens Dishwasher. Due to the added Rinse Aid, the surface tension of the water drops resulting in dry and sparkling clean dishes, leaving no trace of water spots.



### Drying

The inner walls of the dishwasher are heated as hot water is used during the wash cycles. During the drying process, heat from the walls is released which ensures 100% drying of utensils.





Crafted for a sparkling and hygienic experience!

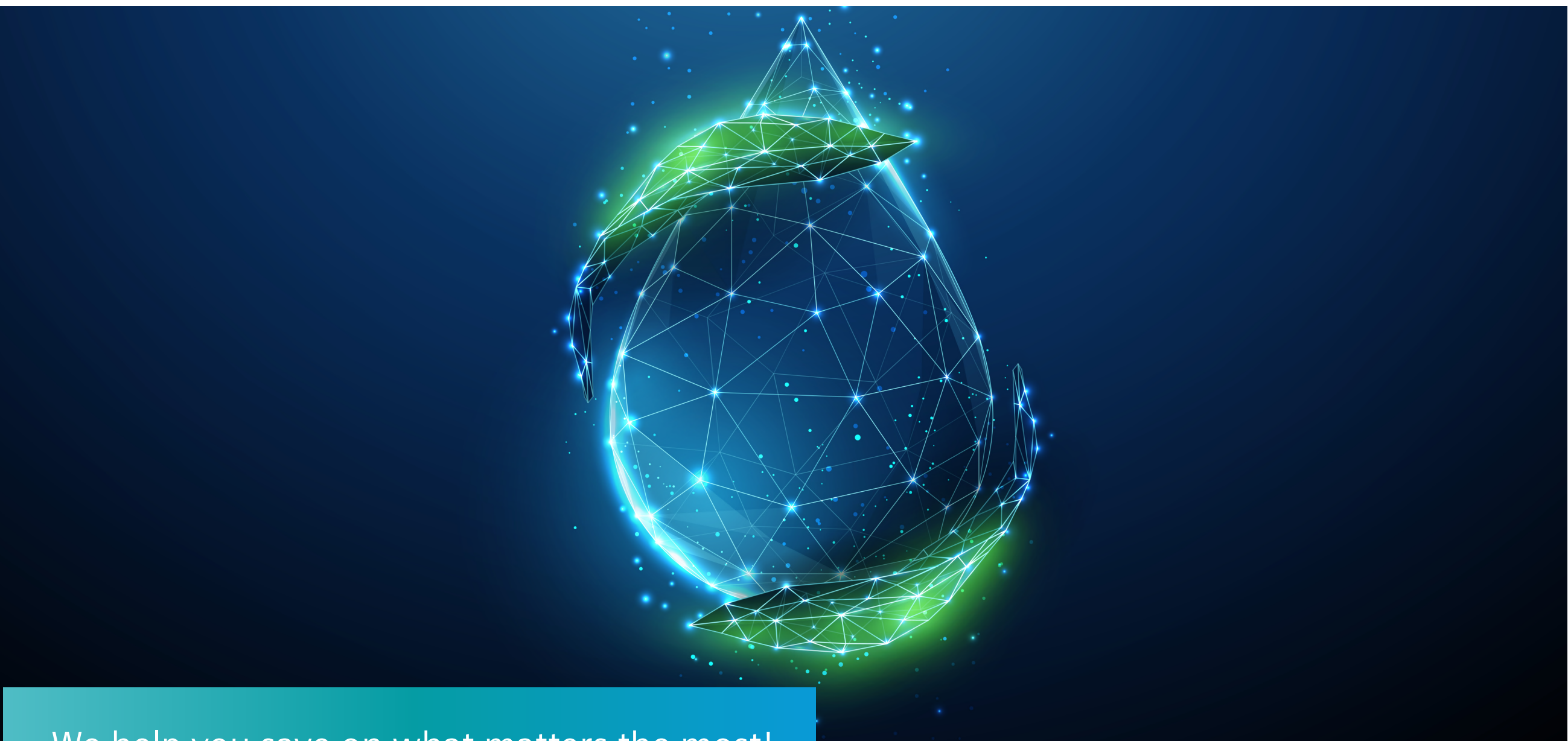
When it comes to greasy utensils and germs, our 70°C hot water wash makes sure that your dishes are 99.99% germ-free with a squeaky clean shine and an odour-free experience.

70°C

**Hot Water Wash**

99.99%

**Kills Germs**



We help you save on what matters the most!

Save loads of water & electricity too!

Two of the most important things we can save and do our environment a world of good is in electricity & water. Our dishwashers work efficiently by consuming just 9.5 litres of water and less than a unit of energy per wash.





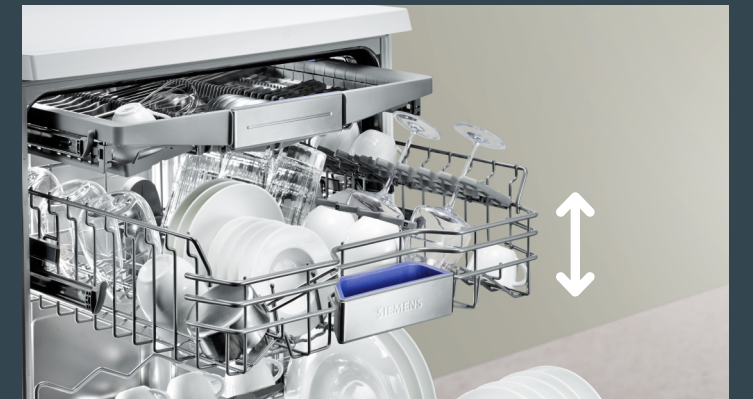
## Enhance the orderliness within your kitchen

Get used to an immaculate kitchen as your utensils perfectly fall in line and stack up, giving you more space and convenience.

New  
Feature

## rackMatic™: for your flexible needs

Leap into the power of innovation with utmost flexibility offered by the 3-Stage rackMatic® basket which comes with the smart clip that helps you adjust at 3 levels vertically making sure that everything finds its place-from large pans to small plates.





# Home Connect^: Surround yourself with smartness

New  
Feature

Control your dishwasher through the Home Connect^ mobile app and in just a few taps unravel the future of connectivity anywhere, anytime.



**Remote Monitoring & Controlling**  
Experience a smart way to track every move of your dishwasher. With a few taps, you can get easy access to current status of your dishwasher on the go. This includes starting and ending a program, notifications when the washing is done and also enabling you to adjust the settings from a remote location.



**Downloadable Programs\***  
The Home Connect^ app allows you to seamlessly download the program of your choice as per your cleaning and specific utensil requirements.



**Notification & Reminder**  
Getting notifications like low rinse aid/salt levels and low detergent levels can be as easy and effortless. The Home Connect^ app brings to you all the important updates right on your mobile phone or smart watch and also reminds you to buy a new package of tablets when needed.



**Remote Diagnostics\***  
Our advanced systems empower our customer service to remotely determine the issue. This further aids our technicians to assist you better as they are aware of the issue reducing time and effort at both ends.



**Voice Assistance**  
It seamlessly integrates with Alexa and Google Assistant. Just by your mere voice, you can easily switch your dishwasher on and off. The voice control function also gives you a check on the duration of the washing cycle.



**Easy Start Assistance**  
Discover a world of convenience that guides you on your dish cleaning preferences in accordance to your dish type. It also recommends the ideal programmes/ options to be used anywhere, anytime.



**Favorites**  
The Home Connect^ app powers you to save all your favorite programs on the home screen for easy access and better navigation.



**Appliance software update through Home Connect^.**



CONNECTED BY  
Home Connect

Connected Partner

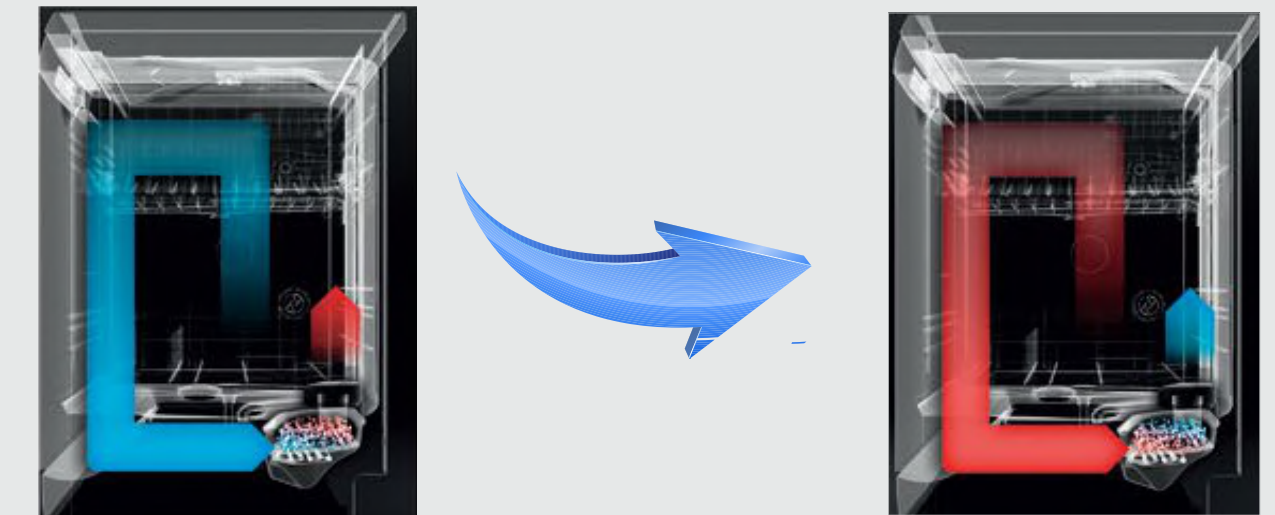


\*Home connect^ is currently available in 9 cities (Mumbai, Pune, Bangalore, Hyderabad, Chennai, Jaipur, Kolkata, Ahmedabad, Delhi) and will be available in the other cities very soon. Remote diagnostics and downloadable programme will be available soon in India.



Dry efficiently and rapidly with Zeolith® Technology

Zeolith®, super-efficient drying patented technology.



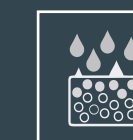
Drying phase Zeolith® absorbs moisture and converts it to heat energy.

Cleaning phase as the mineral is heated during the cleaning cycle, it is recharged and ready to absorb moisture once more.

The mineral zeolite has the ability to absorb moisture and convert it into energy. The versatile material thus ensures faster, energy-efficient drying of your dishes.



**Fast enough to break world record.**  
Siemens dishwashers are powered by Zeolith® drying technology which reduces the complete cycle by 28% than regular dishwashers. This makes us, by a fair distance, the fastest in the world. That's not it; the energy consumption too is at a record 0.8 kWh with a phenomenally quick wash time.



**The revolutionary Zeolith® drying technology**  
Take a leap into the future as your dishes are dried up exceptionally fast and super efficiently. Zeolite is a natural mineral that is capable of absorbing moisture and converting it into thermal energy. This heat is emitted, drying your dishes - even plastics, quickly and energy-efficiently.





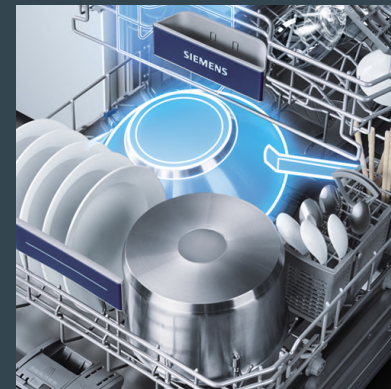
New  
Feature

## Greater overview, more convenience

Our touch panel is not only beautiful, but also intuitive in design and utterly convenient. Sleek in appearance and crafted exquisitely, it offers all functions at your fingertips.

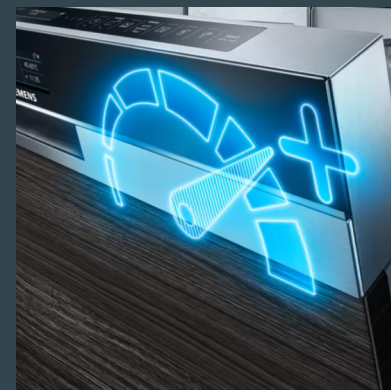
## Dosing with precision

The DosageAssist™ feature drops the tablet into a specially designed tray making sure the water jets precisely target the tablet resulting in an accurate and even dissolution giving you the efficient utilization.



### Innovated for indian utensils

When it comes to an Indian kitchen, utensil stains and space are two things that are a cause of concern. Not anymore. The intensive 70° C cleaning ensures that toughest oily & greasy masala stains on pots & pans are taken care of with ease while making sure all fit in seamlessly.



### VarioSpeedPlus

Sparkling clean dishes in the quickest possible time is what everyone wants. Exactly the reason we have the VarioSpeedPlus feature for our range of dishwashers that saves up to 66% of wash time. All it takes is a touch of a button.



### Half load

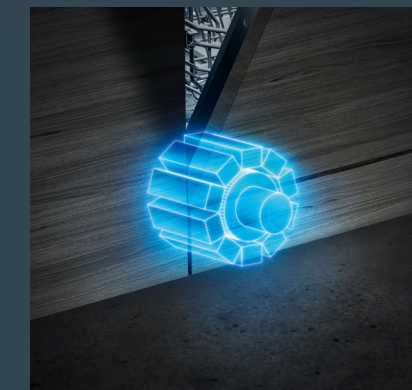
Standing true to its name, the half load does its job of seamlessly washing half the load of dishes while saving on water and energy. A perfect option in case you are in a hurry or have a lesser load.

## Features that excite your imagination



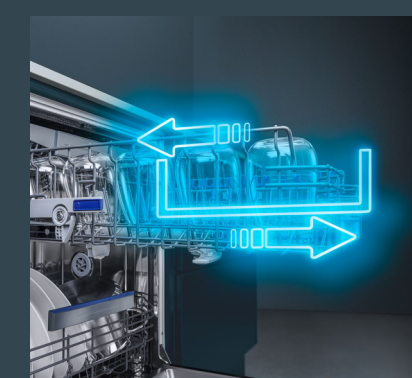
### Protects your delicate glassware / crockery

Our dishwashers are glass-aware of your glass ware. Thanks to the 40°C Glass dedicated program that gently washes your glassware & crockery, giving it sparkling shine while avoiding breakage.



### iQdrive

Siemens Dishwashers are powered by the revolutionary iQdrive motor which is quieter, faster and more efficient. They improve the energy performance of the dishwasher. Set your dishwasher to use less energy while maintaining the same performance level. Its innovative magnetic technology drives the iQdrive without friction for a virtually wear free operation.



### EasyGlide

The smooth-running pull-outs allow the baskets to glide smoothly and quickly, making it particularly convenient to put them in and take them out, even when fully loaded.



Freestanding Dishwasher



New Freestanding Dishwasher



SN27ZI00VI  
15 place settings | Free Standing | Silver Inox



SN25HI00VI  
14 place settings | Free Standing | Silver Inox

Key Highlights	<ul style="list-style-type: none"><li>Zeolith®Drying Technology</li><li>Home Connect^ - IOT Enabled remote Access</li><li>Integration with: Google / Alexa voice assistance, IFTTT, Fitbit/Apple/Android smart watches, Etc</li><li>rackMatic™ - height adjustable basket</li><li>Special Glass Zone</li><li>iQdrive</li><li>Aqua-Sensor, Load-Sensor</li><li>DosageAssist</li><li>Top shower</li><li>Glass Care protection System</li></ul>
Design & Innovation	<ul style="list-style-type: none"><li>Touch Panel</li><li>Inbuilt Water softener</li><li>Self-cleaning filter system with 3-fold corrugated filter</li><li>Downloadable Programme*</li><li>Remote Diagnostic*</li><li>Machine Care Programme</li><li>Detergent Automation</li><li>Time delay: 1-24 hours</li><li>Cutlery Drawer-VarioDrawer Pro</li><li>6 foldable plate racks &amp; 2 cup shelves in Upper basket</li></ul>
Programmes & Options	<ul style="list-style-type: none"><li>8 programmes: including Intensive Kadhai 70°C</li><li>6 Wash Option: Shine + Dry, IntensiveZone, Hygiene 80° Air, VarioSpeedPlus, Machine Care, Remote Start</li></ul>
Technical Information	<ul style="list-style-type: none"><li>Energy consumption: 0.83 kWh</li><li>Water consumption: 9.5L</li><li>Noise level: 46 dB</li><li>Dimensions (HxWxD): 84.5 x 60 x 60 cm</li></ul>

Key Highlights	<ul style="list-style-type: none"><li>Home Connect^ - IOT Enabled remote Access</li><li>Integration with: Google / Alexa voice assistance, IFTTT, Fitbit/Apple/Android smart watches, Etc</li><li>rackMatic™ - height adjustable basket</li><li>Glass Care protection System</li><li>iQdrive</li><li>Aqua-Sensor, Load-Sensor</li><li>Half Load</li><li>DosageAssist</li><li>Top shower</li></ul>
Design & Innovation	<ul style="list-style-type: none"><li>Touch Panel</li><li>Inbuilt Water softener</li><li>Self-cleaning filter system with 3-fold corrugated filter</li><li>Downloadable Programme*</li><li>Remote Diagnostic*</li><li>Detergent Automation</li><li>Time delay: 1-24 hours</li><li>Cutlery Drawer-VarioDrawer</li><li>2 foldable plate racks &amp; 2 cup shelves in top basket</li></ul>
Programmes & Options	<ul style="list-style-type: none"><li>7 programmes: including Intensive Kadhai 70°C</li><li>6 Wash Option: Extra Dry, Intensive Zone, Half Load, HygienePlus, VarioSpeedPlus, Remote Start.</li></ul>
Technical Information	<ul style="list-style-type: none"><li>Energy consumption: 0.92 kWh</li><li>Water consumption: 9.5L</li><li>Noise level: 48 dB</li><li>Dimensions (HxWxD): 84.5 x 60 x 60 cm</li></ul>

<sup>\*</sup>HomeConnect is currently available in 9 cities (Mumbai, Pune, Bangalore, Hyderabad, Chennai, Jaipur, Kolkata, Ahmedabad, Delhi) and will be available in other cities very soon.

<sup>\*</sup>Remote diagonistic & downloadable programs will be available soon in India as well.



# New Freestanding Dishwasher



SN25II00TI

13 place settings | Free Standing | Silver Inox



SN25IW00TI

13 place settings | Free Standing | White

Key Highlights	<ul style="list-style-type: none"><li>• Home Connect^ - IOT Enabled remote Access</li><li>• Integration with: Google / Alexa voice assistance, IFTTT, Fitbit/Apple/Android smart watches, Etc</li><li>• rackMatic™ - height adjustable basket</li><li>• Glass Care protection System</li><li>• iQdrive</li><li>• Aqua-Sensor, Load-Sensor</li><li>• DosageAssist</li><li>• Top shower</li></ul>
Design & Innovation	<ul style="list-style-type: none"><li>• Inbuilt Water softener</li><li>• Self-cleaning filter system with 3-fold corrugated filter</li><li>• Downloadable Programme*</li><li>• Remote Diagnostic*</li><li>• Detergent Automation</li><li>• Time delay: 1-24 hours</li><li>• Cutlery Box - Moveable</li><li>• 2 foldable plate racks &amp; 2 cup shelves in top basket</li></ul>
Programmes & Options	<ul style="list-style-type: none"><li>• 6 programmes: including Intensive Kadhai 70°C</li><li>• 5 Wash Option: Extra Dry, Intensive Zone, Half Load, Vario Eco, Remote Start</li></ul>
Technical Information	<ul style="list-style-type: none"><li>• Energy consumption: 01.35 kWh</li><li>• Water consumption: 11.5L</li><li>• Noise level: 52 dB</li><li>• Dimensions (HxWxD): 84.5 x 60 x 60 cm</li></ul>

<sup>^</sup>HomeConnect is currently available in 9 cities (Mumbai, Pune, Bangalore, Hyderabad, Chennai, Jaipur, Kolkata, Ahmedabad, Delhi) and will be available in other cities very soon.

\*Remote diagonistic & downloadable programs will be available soon in India as well.

# Classic Freestanding Dishwasher



SN256W01GI

13 place settings | Free Standing | White

Key Highlights	<ul style="list-style-type: none"><li>• Glass Care protection System</li><li>• Pre - Activated VarioSpeed Dishwasher</li><li>• iQdrive</li><li>• Aqua-Sensor, Load-Sensor</li><li>• New Wash Programme - HygienePlus</li><li>• DosageAssist</li><li>• Top shower</li></ul>
Design & Innovation	<ul style="list-style-type: none"><li>• Inbuilt Water softener</li><li>• Self-cleaning filter system with 3-fold corrugated filter</li><li>• Detergent Automation</li><li>• Time delay: 1-24 hours</li><li>• Cutlery Box - Moveable</li><li>• 2 foldable plate racks &amp; 2 cup shelves in top basket</li></ul>
Programmes & Options	<ul style="list-style-type: none"><li>• 6 Wash Programmes</li><li>• 3 Wash Options: VarioSpeed, Half load, HygienePlus</li></ul>
Technical Information	<ul style="list-style-type: none"><li>• Energy consumption: 1.02 kWh</li><li>• Water consumption: 9.5L</li><li>• Noise level: 52 dB</li><li>• Dimensions (HxWxD): 84.5 x 60 x 60 cm</li></ul>

<sup>^</sup>HomeConnect is currently available in 9 cities (Mumbai, Pune, Bangalore, Hyderabad, Chennai, Jaipur, Kolkata, Ahmedabad, Delhi) and will be available in other cities very soon.

\*Remote diagonistic & downloadable programs will be available soon in India as well.





Built - in Dishwasher

# New Built - in Dishwasher



SN97YX01CE

14 place settings | Fully Integrated



SN65HX00VI

14 place settings | Fully Integrated

Key Highlights	<ul style="list-style-type: none"><li>• Zeolith® Drying Technology</li><li>• Home Connect^ - IOT Enabled remote Access</li><li>• Integration with: Google / Alexa voice assistance, IFTTT, Fitbit/Apple/Android smart watches, Etc</li><li>• Open assist</li><li>• DryingAssist</li><li>• Special Glass Zone</li><li>• Vario Hinge</li><li>• Dosage Assist</li></ul>	
Design & Innovation	<ul style="list-style-type: none"><li>• Touch control Panel</li><li>• Inbuilt Water softener</li><li>• Self-cleaning filter system with 3-fold corrugated filter</li><li>• Downloadable Programme*</li><li>• Remote Diagnostic*</li><li>• rackMatic™ - height adjustable basket</li><li>• VarioDrawer Pro</li><li>• Glass Care protection system</li><li>• Emotional Light</li><li>• Status Light-Gap illumination</li><li>• Detergent Automation</li><li>• iQdrive</li></ul>	
Programmes & Options	<ul style="list-style-type: none"><li>• 8 programmes: including Brilliant Shine</li><li>• 6 special options: Shine + Dry, Intensive Zone, HygienePlus, VarioSpeedPlus, Machine Care, Remote Start</li></ul>	
Technical Information	<ul style="list-style-type: none"><li>• Energy consumption: 0.74 kWh</li><li>• Water consumption: 9.5L</li><li>• Noise level: 43 dB</li><li>• Dimensions (HxWxD): 81.5 x 59.8 x 55 cm</li></ul>	

Key Highlights	<ul style="list-style-type: none"><li>• Home Connect^ - IOT Enabled remote Access</li><li>• Integration with: Google / Alexa voice assistance, IFTTT, Fitbit/Apple/Android smart watches, Etc</li><li>• rackMatic™ - height adjustable basket</li><li>• iQdrive</li><li>• Aqua-Sensor, Load-Sensor</li><li>• DosageAssist</li></ul>
Design & Innovation	<ul style="list-style-type: none"><li>• Inbuilt Water softener</li><li>• Self-cleaning filter system with 3-fold corrugated filter</li><li>• Downloadable Programme*</li><li>• Remote Diagnostic*</li><li>• VarioDrawer</li><li>• Glass Care protection System</li><li>• Detergent Automation</li><li>• Top shower</li></ul>
Programmes & Options	<ul style="list-style-type: none"><li>• 6 programmes: including Intensive Kadhai 70°C</li><li>• 5 special options: Intensive Zone, Halfload, VarioSpeedPlus, Extra Dry, Remote Start</li></ul>
Technical Information	<ul style="list-style-type: none"><li>• Energy consumption: 0.92 kWh</li><li>• Water consumption: 9.5L</li><li>• Noise level: 44 dB</li><li>• Dimensions (HxWxD): 81.5 x 59.8 x 55 cm</li></ul>

<sup>\*</sup>HomeConnect is currently available in 9 cities (Mumbai, Pune, Bangalore, Hyderabad, Chennai, Jaipur, Kolkata, Ahmedabad, Delhi) and will be available in other cities very soon.

<sup>\*</sup>Remote diagnostic & downloadable programs will be available soon in India as well.



# New Built - in Dishwasher



SN57ZS00VI  
15 place settings | Semi-integrated



SN55HS00VI  
14 place settings | Semi-integrated

Key Highlights	<ul style="list-style-type: none"><li>• Zeolith® Drying Technology</li><li>• Home Connect^ - IOT Enabled remote Access</li><li>• Integration with: Google / Alexa voice assistance, IFTTT, Fitbit/Apple/Android smart watches, Etc</li><li>• rackMatic™ - height adjustable basket</li><li>• iQdrive</li><li>• Aqua-Sensor, Load-Sensor</li><li>• Dosage Assist</li></ul>
Design & Innovation	<ul style="list-style-type: none"><li>• Touch control Panel</li><li>• Inbuilt Water softener</li><li>• Downloadable Programme*</li><li>• Remote Diagnostic*</li><li>• VarioDrawer Pro</li><li>• Glass Care protection System</li><li>• Emotional Light</li><li>• Detergent Automation</li><li>• iQdrive</li></ul>
Programmes & Options	<ul style="list-style-type: none"><li>• 8 programmes: including Mixed Load</li><li>• 6 special options: Hygiene 80° Air, Shine + Dry, Intensive Zone, VarioSpeedPlus, Machine Care, Remote Start</li></ul>
Technical Information	<ul style="list-style-type: none"><li>• Energy consumption: 0.83 kWh</li><li>• Water consumption: 9.5L</li><li>• Noise level: 46 dB</li><li>• Dimensions (HxWxD): 81.5 x 59.8 x 57.3 cm</li></ul>

Key Highlights	<ul style="list-style-type: none"><li>• Home Connect^ - IOT Enabled remote Access</li><li>• Integration with: Google / Alexa voice assistance, IFTTT, Fitbit/Apple/Android smart watches, Etc</li><li>• rackMatic™ - height adjustable basket</li><li>• iQdrive</li><li>• Aqua-Sensor, Load-Sensor</li><li>• Dosage Assist</li></ul>
Design & Innovation	<ul style="list-style-type: none"><li>• Inbuilt Water softener</li><li>• Self-cleaning filter system with 3-fold corrugated filter</li><li>• Downloadable Programme*</li><li>• Remote Diagnostic*</li><li>• VarioDrawer</li><li>• Glass Care protection System</li><li>• Detergent Automation</li><li>• Top shower</li></ul>
Programmes & Options	<ul style="list-style-type: none"><li>• 6 programmes: including Intensive Kadhai 70°C</li><li>• 5 special options: Intensive Zone, Halfload, VarioSpeedPlus, Extra Dry, Remote Start</li></ul>
Technical Information	<ul style="list-style-type: none"><li>• Energy consumption: 0.92 kWh</li><li>• Water consumption: 9.5L</li><li>• Noise level: 48 dB</li><li>• Dimensions (HxWxD): 81.5 x 59.8 x 57.3 cm</li></ul>

^HomeConnect is currently available in 9 cities (Mumbai, Pune, Bangalore, Hyderabad, Chennai, Jaipur, Kolkata, Ahmedabad, Delhi) and will be available in other cities very soon.

\*Remote diagnostic & downloadable programs will be available soon in India as well.



The **Finish products** are easily available in all leading retail stores & online portals.

The Tablet contains a mixture of Detergent, Dishwashing Salt and Rinse Aid. One tablet is ideal for one wash cycle.



BSH Household Appliances Manufacturing Pvt. Ltd.  
Arena House, II Floor, Main Building,  
Plot No.103, Road No.12, MIDC,  
Andheri, Mumbai 400093. INDIA.

Siemens toll free number - 1800 209 1850  
(Monday to Saturday: 8am to 8pm)

[www.siemens-home.bsh-group.in](http://www.siemens-home.bsh-group.in)

BSH Group is a Trademark Licensee of Siemens AG.  
Valid from June, 2021.

Important Notes:  
Certain appliances shown in this catalogue may not be available in India. Model numbers and specifications are for reference only and subject to change without prior notice. Please contact your local Siemens retailer for the latest information.

BSH Household Appliances Manufacturing Pvt. Ltd. reserves the right to change specifications without notice, in the interest of technological progress. While every effort has been made to ensure that all specifications and descriptions are correct at the time of going to press this brochure should not be regarded as infallible guide nor as an offer of sale for a particular product. Due to variables in the reproduction process, colours of actual products may vary slightly from those depicted. We recommend a visit to a Siemens dealer to conrm that specifications and colours are to your satisfaction.

All descriptions and installation diagrams are intended as a guide only. For additional technical information, full dimensional and installation details, please refer to the instruction manual supplied with the appliance.

All rights reserved. No part of this publication may be reproduced In any form by any means without the prior written permission of BSH Household Appliances Manufacturing Pvt. Ltd. (EOE)